

13



Purple Needle Grass

Nassella pulchra

Perennial grass native to California. This grass forms clumps characterized by long 4 in. awns—needlelike appendages that create a feathery look. Useful for revegetation of wild areas, soil stabilization, and for restoring natural meadows. Blooms in late winter, early spring.

14

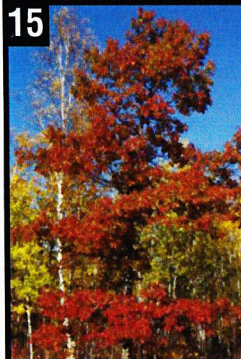


Coast Live Oak

Quercus agrifolia

This oak grove was provided to the City through the generous donation of Intuit and is in dedication of the company's founder, Scott Cook, for his 25th anniversary with the company. The Coast Live Oak is an evergreen tree native to the California Coast and its canopy can reach 20-70 ft. in height and spread. Round-headed and wide spreading, it drops almost all its old leaves in early spring. Oak tree saplings were propagated from acorns found along the Stevens Creek Watershed.

15



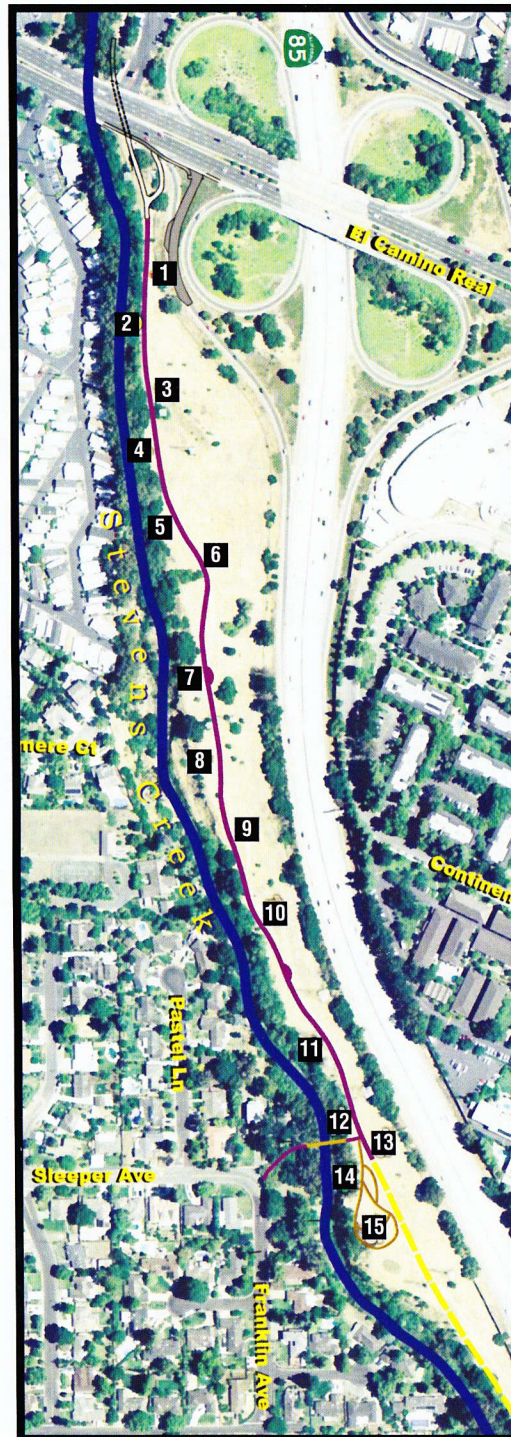
Red Oak

Quercus rubra

Deciduous tree native to eastern North America. Can reach 60-75 ft. tall and 50 ft. wide, with spreading branches and rounded canopy. New leaves and leaf-stalks are red or bright yellow in spring, dark green in summer, and turn dark red or orange in the fall.



CITY OF MOUNTAIN VIEW



City of Mountain View



Stevens Creek Trail
Dedication Plant Walk



1

California Buckeye
Aesculus californica

Deciduous tree native to California Coastal Ranges in dry slopes and canyons below 4,000 feet. Often multi-trunked and grows 10-20 ft. high and 30 ft. wide. Striking sight in the spring when fragrant, cream colored flower plumes make it a giant candelabra.



2

California Bay
Umbellularia californica

Evergreen tree native to California Coast Ranges and grows slowly, about a foot/year to 20-25 ft. high and wide. In the forest, it can grow up to 75 ft. Lance-shaped, 2-5 in. long leaves are medium to deep yellow-green and glossy above, and dull light green beneath. Leaves can be substituted for sweet bay in cooking, but they have more of a pungent flavor.



3

California Sagebrush
Artemisia californica

Evergreen shrub native to the coastal region from Northern California to Baja California. It grows 1.5-5 ft. tall and 4-7 ft. wide, with finely divided grayish white foliage.



4

California Sycamore
Platanus racemosa

Deciduous tree native to California foothills and Coast Ranges. Fast rate of growth to 30-80 ft. tall and 20-50 ft. wide, frequently with multiple or leaning trunks. Smooth branches are often gracefully twisted and contorted. Deeply lobed leaves turn dusty brown early in the autumn.



5

Coffeeberry
Rhamnus californica

Evergreen shrub native to California and southwest Oregon. Grows to 15 ft. tall and 8 ft. wide. Leaves are 1-3 in. long and are variable, shiny or dull, dark to yellowish green. Berries turn from green to red to black as they ripen.



6

Bush Anemone
Carpenteria californica

Evergreen shrub native to the Central Valley. Attractive, formal-looking shrub grows slowly up to 4-6 ft. tall and wide. In late spring and summer, clusters of scented, 1-3 in., yellow-centered white flowers like anemones appear at branch ends.



7

Toyon
Heteromeles arbutifolia

Evergreen shrub native to California Coastal Ranges, Sierra Nevada Foothills and Baja California. Grows as a dense shrub 6-10 ft. tall and wide. Thick, leathery, glossy dark green leaves are 2-4 in. long, edged with bristly, pointed teeth. Small white flowers in flattish clusters appear in summer followed by pea-size, bright red berries in the fall/winter.



8

Hollyleaf Cherry
Prunus ilicifolia

Evergreen shrub native to California Coastal Ranges. Can grow up to 25 ft high and wide. Glossy, oval to elliptical leaves 2 in. long are light green when new, maturing to a rich deep green. They are spiny edged, like holly, and bloom at leafout, bearing fragrant, creamy, white flowers in narrow long spikes.



9

Pink Winter Curren
Ribes sanguineum

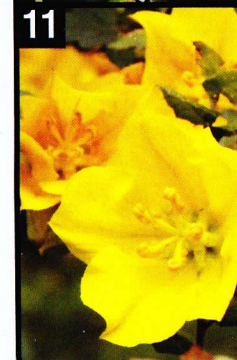
Deciduous shrub native to Coastal Ranges from California to British Columbia. Grows to 12 ft. tall and wide, with maple-like dark green leaves that are 2.5 in. wide. In spring, produces drooping, 2-4 in. long clusters of deep pink flowers. Blue-black fruit has a whitish bloom.



10

Buckbush
Ceanothus velutinus

Evergreen shrub native to California. Grows between 3-8 ft. tall and wide with glossy, aromatic leaves that are 3 in. long. White flowers bloom in late spring.



11

California Glory
Fremontodendron

Evergreen shrub native to California and parts of central Arizona. Fast growing plant that can reach 20 ft. tall and 12 ft. wide. Leathery leaves are dark green above, felted beneath. Very showy, with saucer-shaped yellow blossoms in spring.



12

Common Yarrow
Achillea millefolium

Perennial shrub native to Europe and western Asia. Erect plant with narrow green or grayish leaves and flat-topped white flower clusters on 3-ft. stems. Yarrow is among the most carefree and generously blooming perennials for summer and early fall.

All of the plants along the trail were chosen for their drought tolerant qualities.