



AGENDA: March 24, 2009

4.10

CATEGORY: Consent

DEPT.: Public Works

TITLE: Stevens Creek Trail, El Camino Real to
Sleeper Avenue, Project 08-37—
Construction Contract Amendment

RECOMMENDATION

Authorize the City Manager to execute a \$40,500 construction contract amendment with McGuire & Hester to construct an oak grove for Stevens Creek Trail, El Camino Real to Sleeper Avenue, Project 08-37.

FISCAL IMPACT

No fiscal impact. The donation from Intuit, Inc. is \$50,000. The recommended action increases the construction contract by \$40,500 for construction of the oak grove. The remaining \$9,500 will fund the design of the oak grove, city administration and maintenance.

BACKGROUND AND ANALYSIS

On June 24, 2008, the Council approved plans and specifications for Stevens Creek Trail, El Camino Real to Sleeper Avenue, Construction, Project 08-37. A construction contract was awarded in July to the low bidder, McGuire & Hester of Oakland. Construction is approximately 75 percent complete, with major remaining items being stone walls at the bridge, paving the path and landscaping.

On October 14, 2008, the Council accepted a \$50,000 donation from Intuit, Inc. for an oak grove near the Sleeper Avenue bridge (Attachment 1). The grove includes 40 native coast live oak trees and an informal, decomposed granite pathway. The Stevens Creek Trail contractor, McGuire & Hester, submitted a proposal of \$40,500 to construct the grove. Because the coast live oaks are being locally grown from acorns collected within the Stevens Creek watershed, the trees will be very small when planted.

During the Council public input period in October, a resident requested that larger, fast-growing trees be planted with the project to mitigate noise and to screen out the freeway view from the Sleeper Open Space. Council requested staff investigate options and report back to them. Staff has modified the trail landscaping plans to add two 60" box-size red oak trees in the oak grove, seven 48" box cedar trees along the back of the Sleeper Open Space and one 60" box cedar tree between the bridge approach and the northerly residential property (Attachment 2). The larger trees will be approximately 12' to 14' tall when planted, and the cedars will grow relatively quickly compared with oak trees. The cost of the screening trees,

AGENDA: March 24, 2009

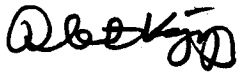
PAGE: 2

including irrigation, is approximately \$32,000 and will be funded from existing construction contingency, so no Council action is needed.

Pending weather conditions, all work is expected to be completed by late April 2009.

PUBLIC NOTICING—Agenda posting.

Prepared by:

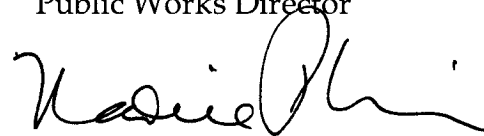


Robert Kagiya
Principal Civil Engineer

Approved by:



Cathy R. Lazarus
Public Works Director



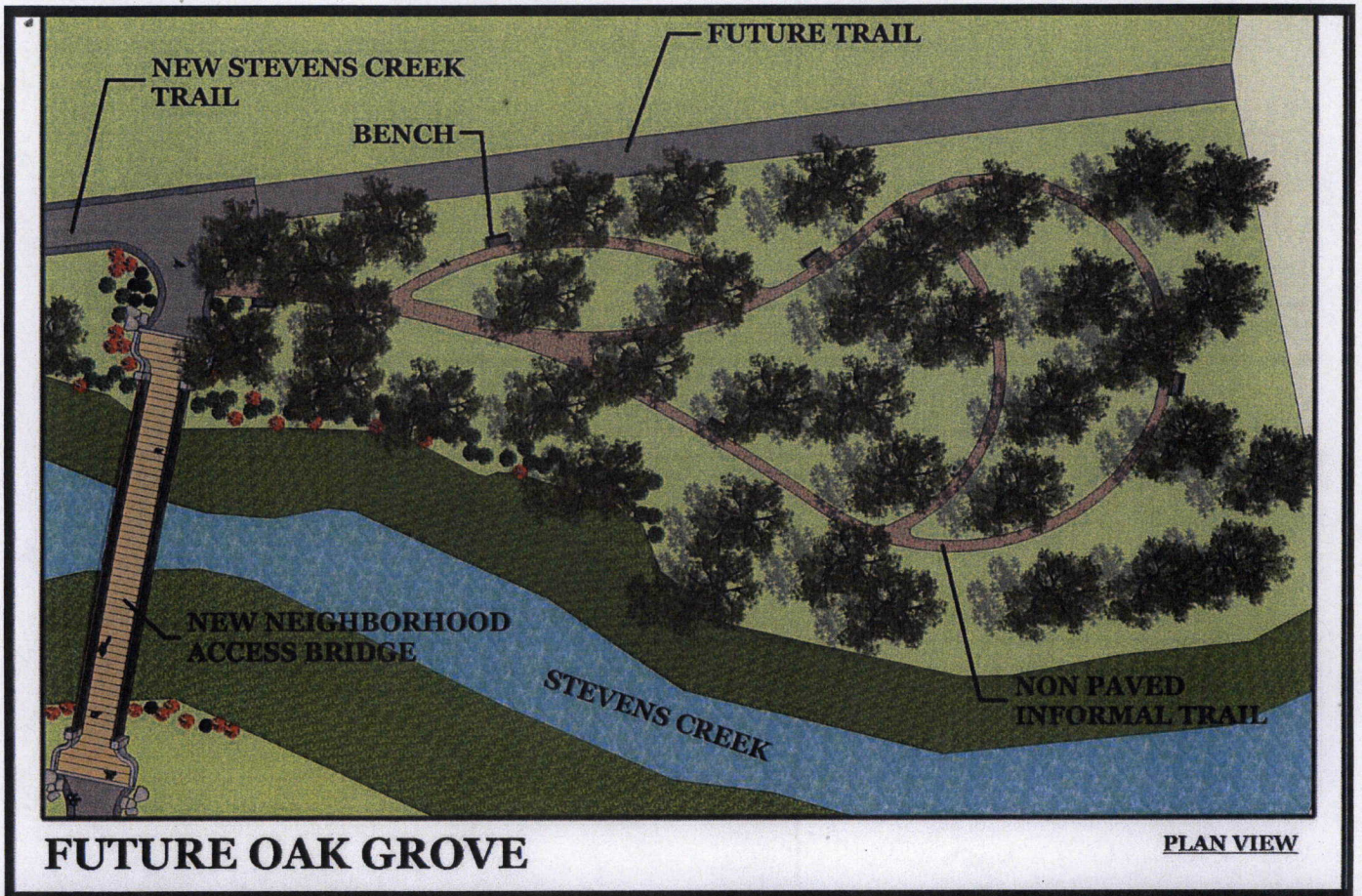
Kevin C. Duggan
City Manager

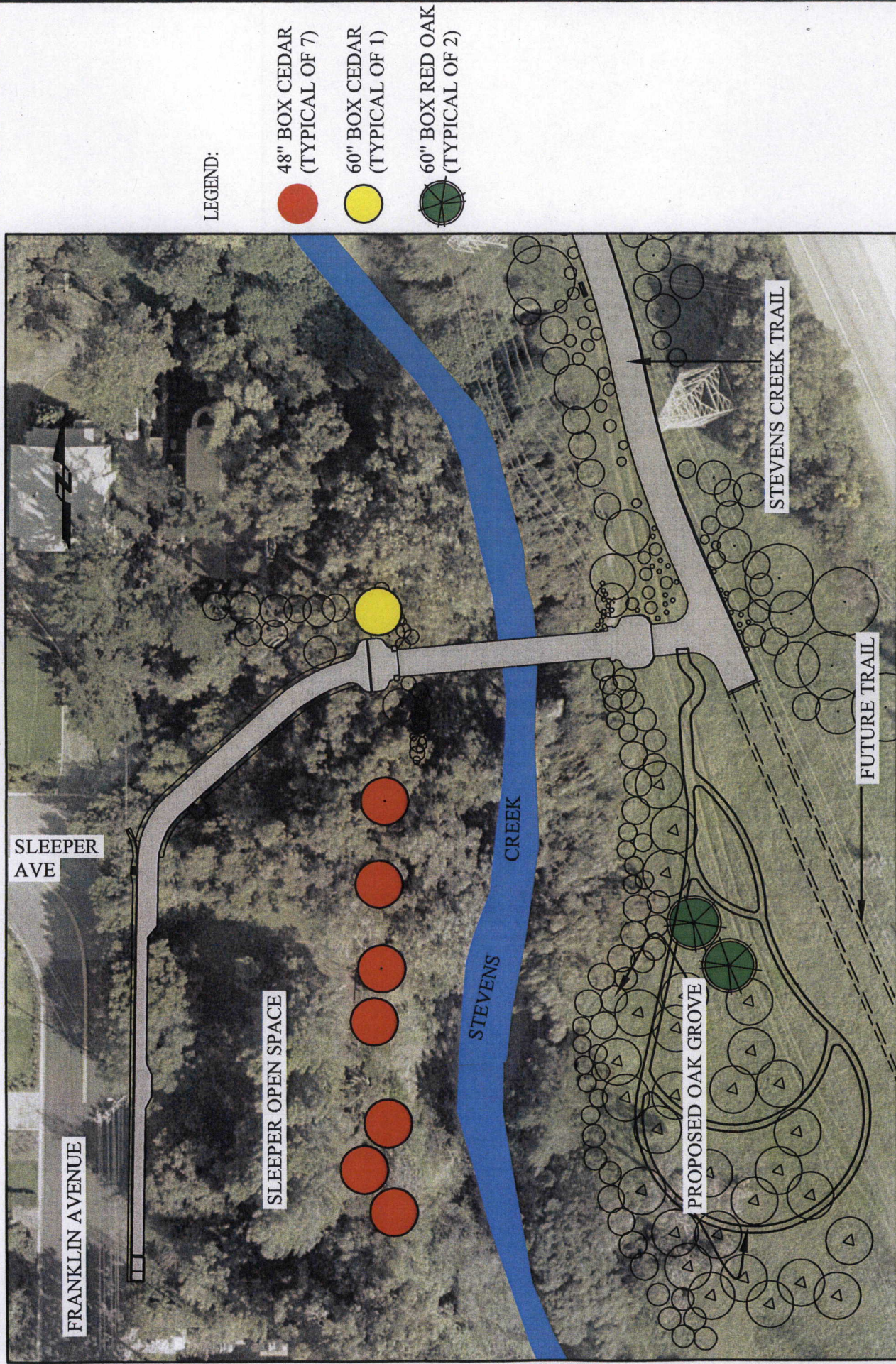
RK/9/CAM

909-03-24-09M-E^

Attachment: 1. Oak Grove
2. Tree Screening for Sleeper Open Space Area

cc: ATCM—Thomas, CE, DE, SCE—Macaraeg, SAA—Irwin, ACE—Chen, F/c





TREE SCREENING AT SLEEPER OPEN SPACE
CITY OF MOUNTAIN VIEW

