

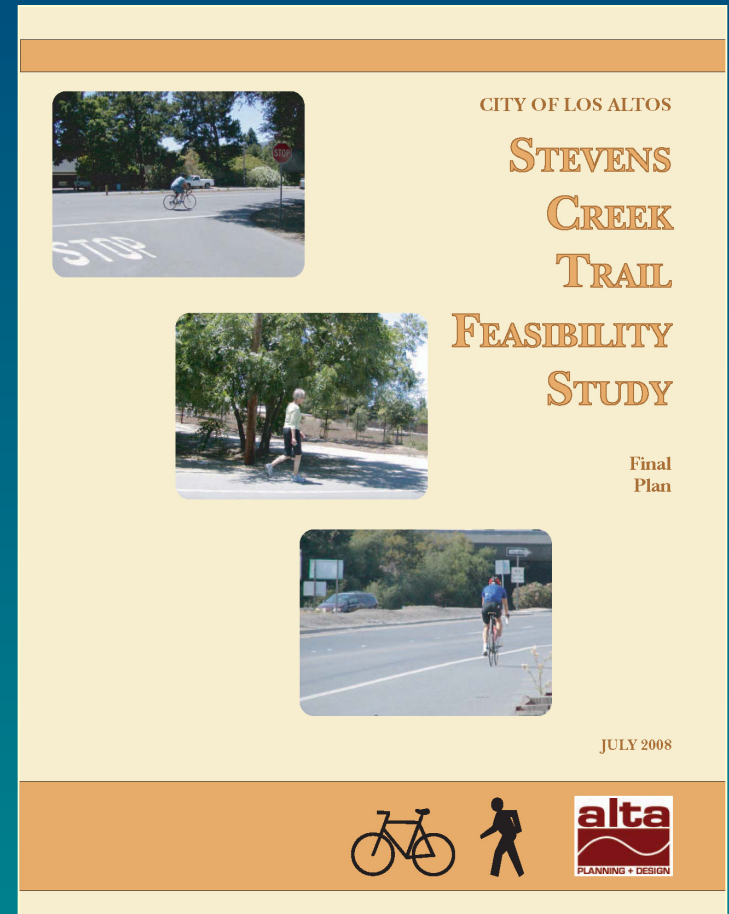
# STEVENS CREEK TRAIL FEASIBILITY STUDY

*Los Altos City Council*

*September 2008*



Stevens Creek Trail  
Feasibility Study  
Task Force



# Agenda

SCT Vision  
Objectives  
Process  
Criteria  
Alternatives  
Recommendation  
Justification  
Next Steps

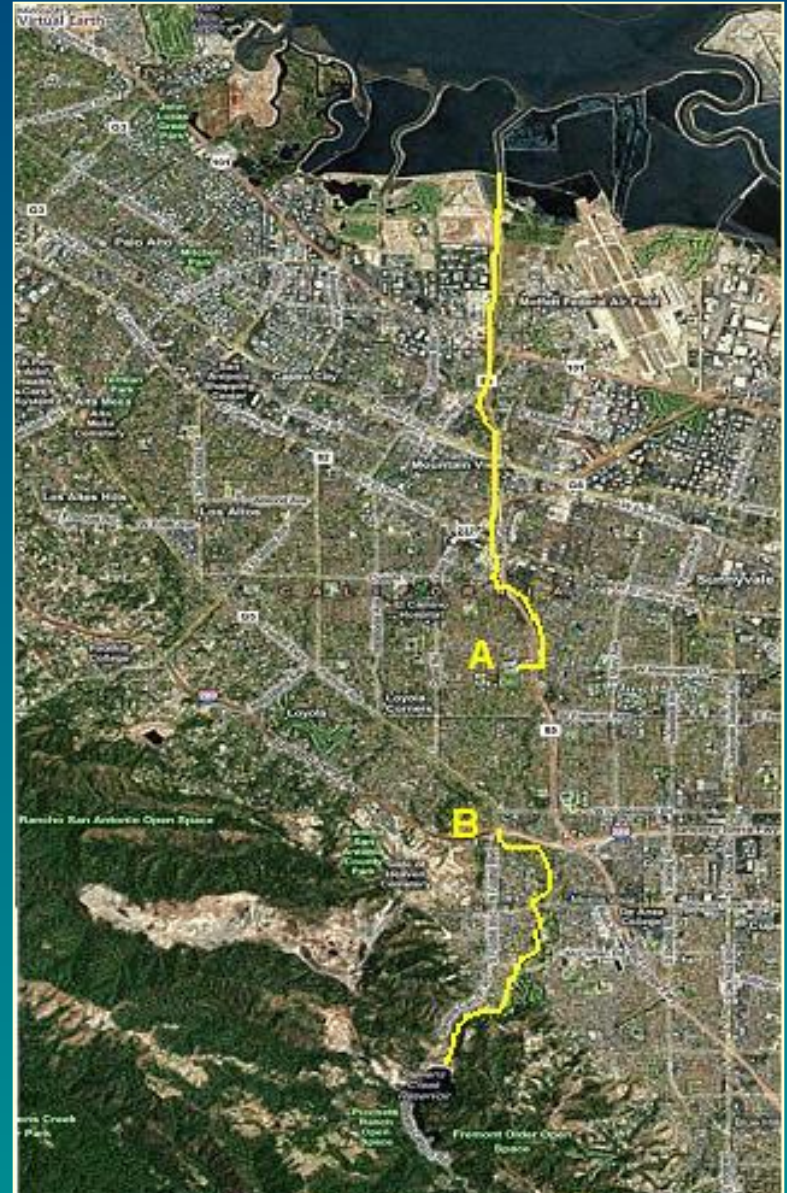


# Stevens Creek Trail -- The Vision

Regional

Multi-user

Community asset



# Objectives

Study and evaluate  
Engage the public  
Develop alternatives  
Recommendation

## Council Restriction:

Trail must be on public land and will therefore **not align with the creek** as it abuts to private property in Los Altos



*Fremont Avenue - Existing*



*Mt. View High School*



# Process

Consultant/Task Force

Public Workshop #1

Inventory of Existing Conditions

Meetings with Neighboring Cities

Public Workshop #2

Evaluation

Recommendation



# Public Workshops

- Workshop #1
  - ~70 attendees
  - Break-out Groups
    - Attributes
    - Concerns
    - Possible Alignments

## Stevens Creek Link Trail Feasibility Study Community Meeting

### We Want to Hear from You

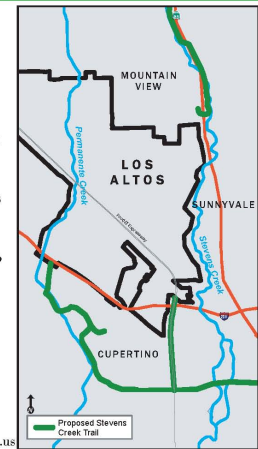
The City of Los Altos is hosting a community meeting on linking the Stevens Creek Bicycle/Pedestrian Trail between Mountain View and Cupertino. This Workshop will be an open discussion with you about what this trail should become, what types of uses are appropriate, where it might be located, etc. With your input, we will develop options and alternatives for this interconnection that we will present to you in a future community meeting and to your City Council.



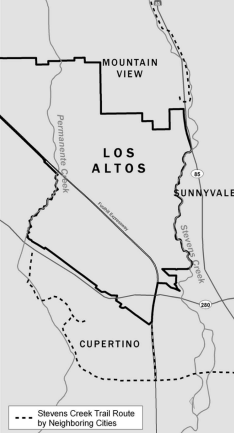
**Location:** Grant Park Multi-Purpose Room  
1575 Holt Ave  
Los Altos, CA 94024

**Date:** May 30th, 2007

**Time:** 6:30 to 8:30 pm

For more information, contact us at (650) 947-2780 or [larry.lind@ci.los-altos.ca.us](mailto:larry.lind@ci.los-altos.ca.us)



**Stevens Creek Link Trail  
Feasibility Study  
Community Meeting**

**WE INVITE YOU TO GIVE US YOUR FEEDBACK**

The City of Los Altos is hosting its second community meeting on linking the Stevens Creek Bicycle/Pedestrian Trail between Mountain View and Cupertino. A draft Feasibility Study, which includes potential trail alignments, will be presented and workshops conducted to get your valuable feedback.

**Date:** December 5, 2007 (Wednesday)  
**Time:** 6:30 to 8:30pm  
**Location:** Grant Park Multi-Purpose Room  
 1575 Holt Avenue, Los Altos

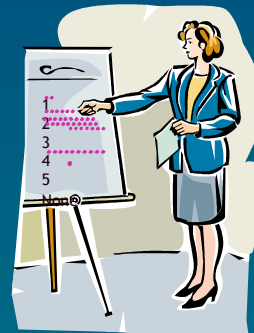
Your inputs are important to ensure this interconnection will meet the needs of our community.

- Workshop #2
  - ~65 attendees
  - Break-out Groups
    - Five Options
    - Pros/Cons
  - Dot Voting

The Trail Objectives **Process** Criteria Alternatives Recommendation Justification Next Steps

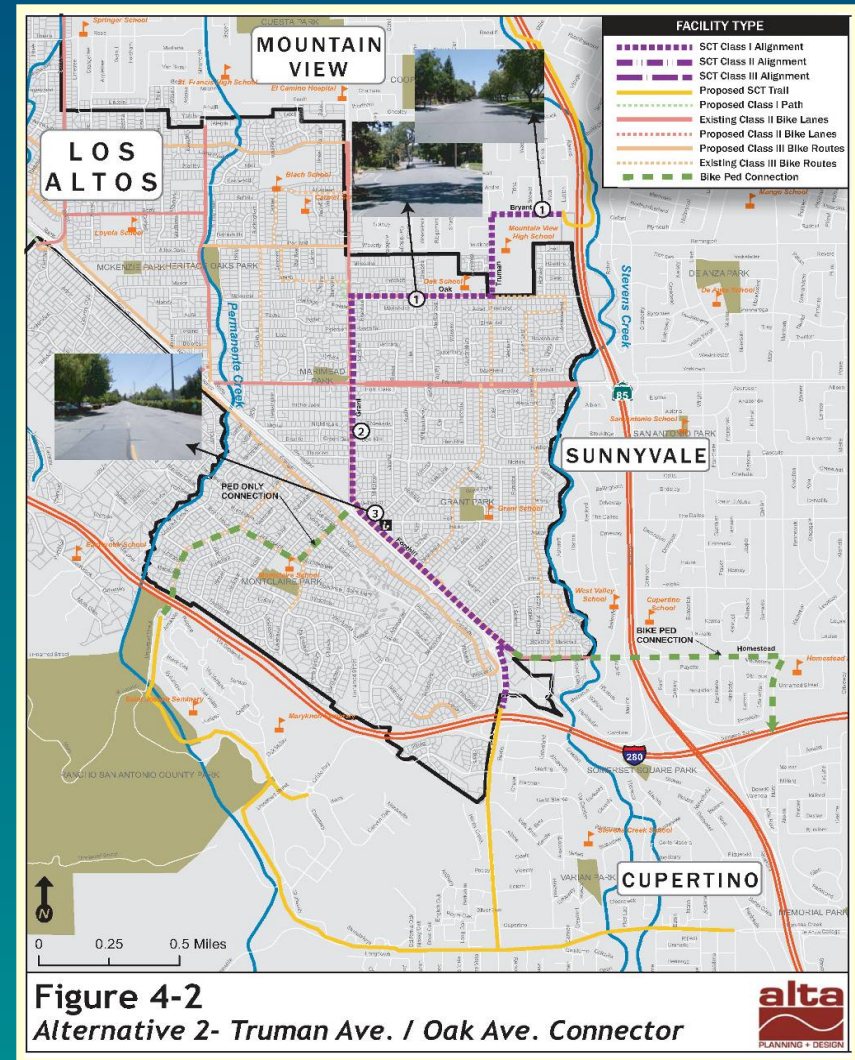
# Criteria

Public Support  
Safety to the Trail User  
Trail Environment  
Opportunities for Multiple User Groups  
Environmental Impacts  
Connections to Key Destinations  
Neighborhood Impact  
Accessibility to Los Altos Residents  
Homeowner Security  
Timing  
Traffic Impacts  
Directness of Route



# Alternative 1

# Alternative 2





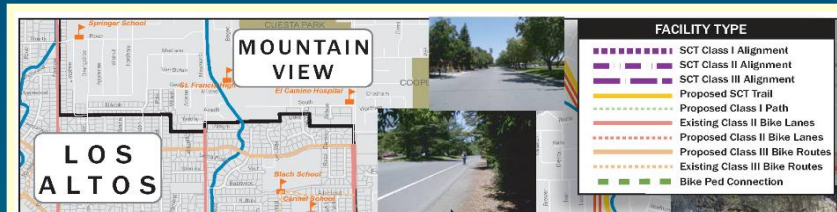
# Alternative 4



# Alternative 5



# Recommendation - Alternative 3



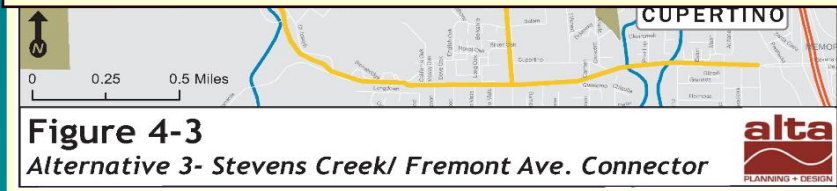
## Advantages

- + Public Support
- + Trail Environment
- + Community Access

Alternatives	1st Choice	2nd Choice
1. Bryant Avenue Connector	2	4
2. Truman Avenue / Oak Avenue Connector	6	17
3. Stevens Creek / Fremont Ave Connector	27	12
4. Split Bicycle / Pedestrian Option	0	5
5. Fallen Leaf Connector	10	7
6. Prefer Another Alignment	1	1
7. No Project in Los Altos	3	1
<b>Total</b>	<b>49</b>	<b>47</b>

## Disadvantages

- Environmental Permits
- Cost





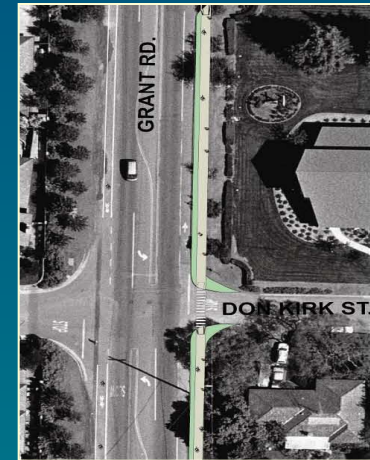
# Alternative 3 - Phase 1



Fremont Avenue  
\$717,790  
Phase 1



# Alternative 3 - Phase 2



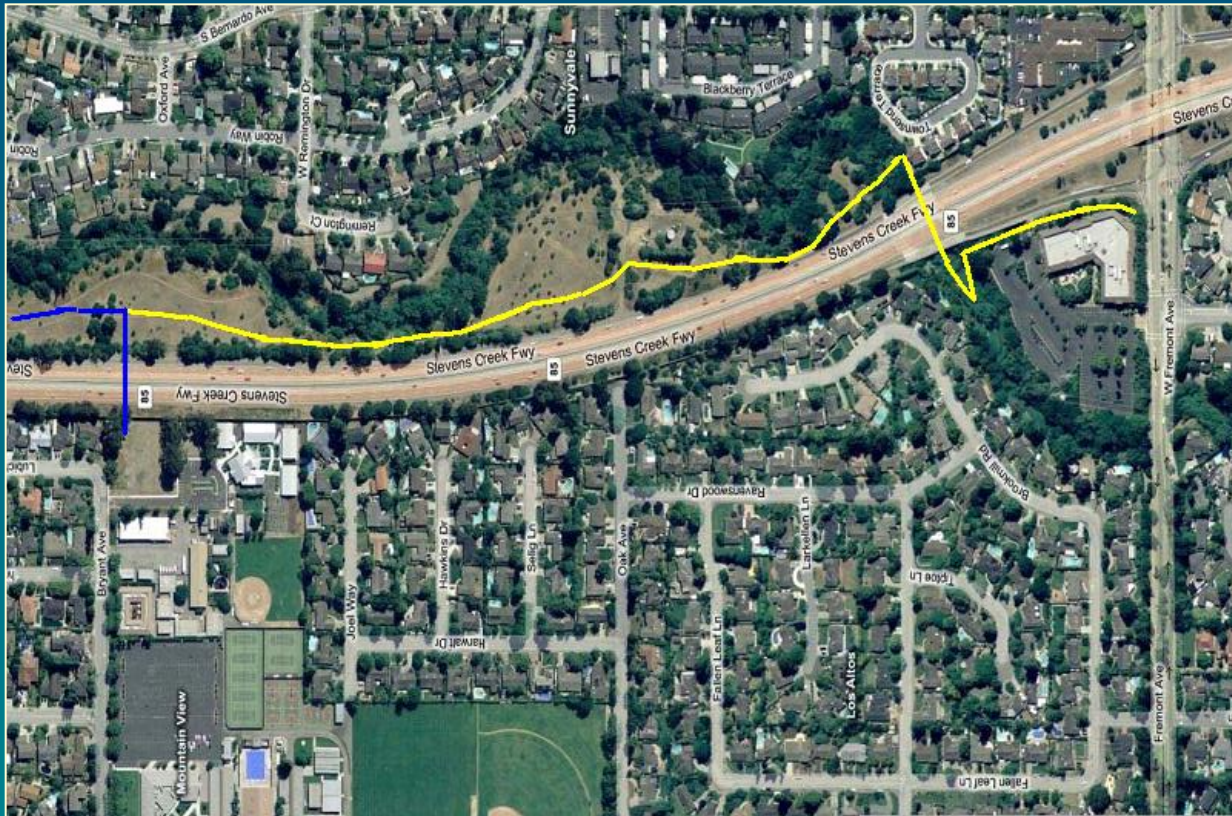
Grant Road -  
Fremont Ave to  
South Bound Terminus

\$351,945

Phase 2



# Alternative 3 - Phase 3



Adjacent to  
Highway 85

\$1,792,566

Phase 3



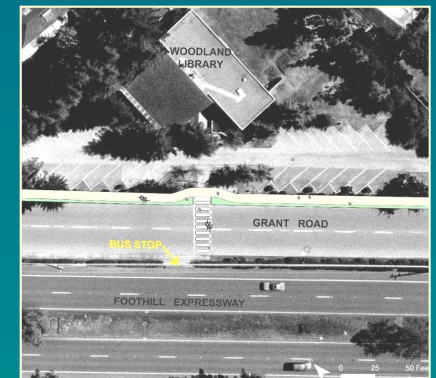
# Alternative 3 - Phase 4



Grant Road -  
Adjacent to Foothill  
Expressway

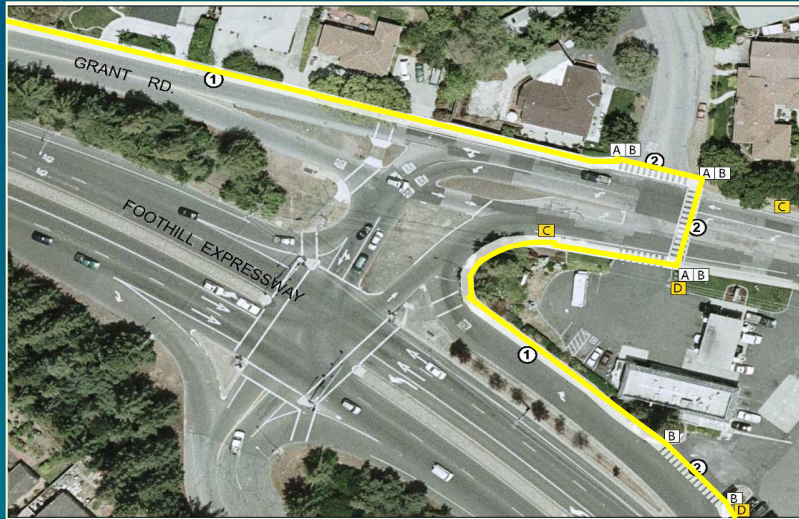
\$474,850

Phase 4





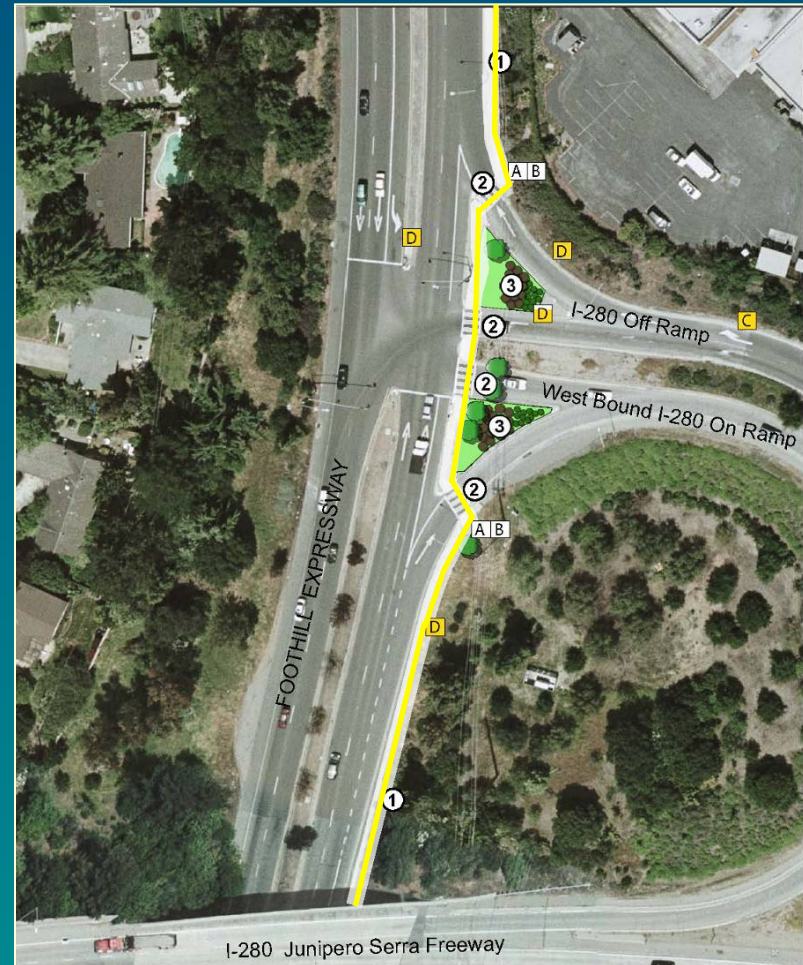
# Alternative 3 - Phase 5



Grant Road -  
Expressway Connections

\$222,900

Phase 5



# Project Phases & Cost

Phase 1 - Fremont Avenue \$717,790

Phase 2 - Grant Road \$351,945

(Fremont Ave to South Bound Terminus) \$1,792,566 \$474,850

Phase 3 - Adjacent to Highway 85

Phase 4 - Grant Road \$222,900

(Adjacent to Foothill Expressway)

Phase 5 - Grant Rd/Expressway Connections

---

---

Estimated Total Cost \$6.7 million

(with permitting, design & engineering, contingency)



# Next Steps

Staff recommends:

- Accepting Study
- Procuring grant funding for the next phase

# Credits

## Council Liaison:

Mayor Carpenter

## City Engineer:

Larry Lind, Senior Engineer

## Alta Planning + Design:

George Hudson, Principal &  
Landscape Architect

Matt Lasky, Planner

## Task Force:

Jeannie Bruins, co-chair  
(Community Rep.)

Curt Riffle, co-chair  
(Community Rep.)

Randy Rhody, secretary  
(Los Altos BPAC)

LaNae Avra (Community Rep.)

Ross Heitkamp (FOSCT)

Chris Hlavka (Los Altos BPAC)

Kevin Jackson (Sunnyvale BPAC)

Janet Lorenzin (Community Rep.)

Henry Pastorelli (Los Altos BPAC)

Lisa Ricketts (Community Rep.)