

Public meeting

Stevens Creek Fish Passage Enhancement Project

You are invited

Date: Thursday, Nov. 12, 2009

Time: 6:30 - 8 p.m.

Place: Benjamin Bubb Elementary School
Multi-purpose Room
525 Hans Avenue
Mountain View, CA 94040

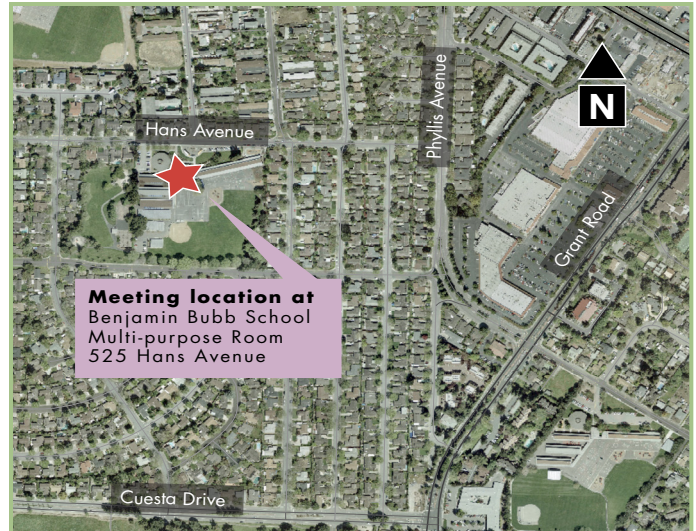
Please join the Santa Clara Valley Water District for a public meeting regarding the Stevens Creek Fish Passage Enhancement Project. The purpose of the meeting is to provide updates and to seek your input on the recommended project.

Stevens Creek has been identified as one of the prime steelhead habitats within the county. Improving fish passage within the Stevens Creek corridor will promote and enhance the existence of steelhead and other salmonid species.

About the project

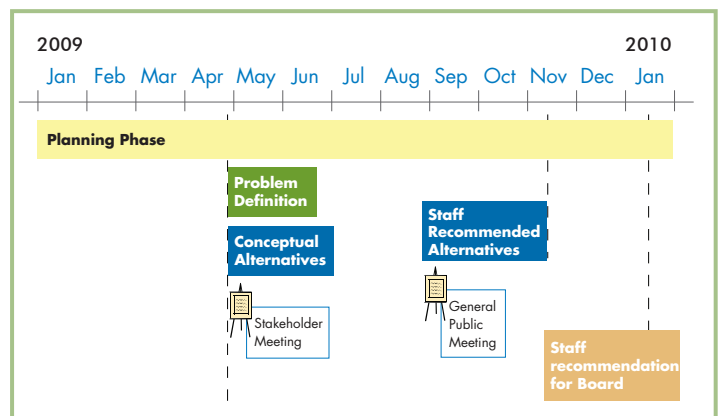
There are two components to the project. The first one is to evaluate the feasibility of removing or replacing each of the three fish barriers at Moffett Boulevard, Evelyn Avenue and Fremont Avenue. The objective is to improve the functionality of fish passage at each site while maintaining or improving the stream functions.

The second component to the project is to determine if a pilot multi-port structure could be constructed near the Stevens Creek Dam structure, within Stevens Creek Reservoir. The outlet structure at the dam would optimize the outflow of water from the dam at various levels, while maintaining suitable temperature requirements for fish habitat. The goal is to maximize water release during summer months, while maintaining a target water temperature immediately downstream of Interstate 280.



Meeting location highlighted in map above.

The project is currently in the planning phase. We will continue to work with interest groups and the community throughout the project to identify the most suitable alternatives and to meet the critical needs of the surrounding habitat.



Clean,
Safe Creeks

Santa Clara Valley
Water District
SM

continued on back...

You're in a watershed

No matter where you are, you're in a watershed. A watershed is the area of land that drains a common waterway. In Santa Clara County, our creeks catch rain and runoff from storm drains and carry the water north to San Francisco Bay or south to Monterey Bay. Along the way, some of the water is used to fill reservoirs for drinking water, replenish the underground aquifer and create better habitat for fish and wildlife.

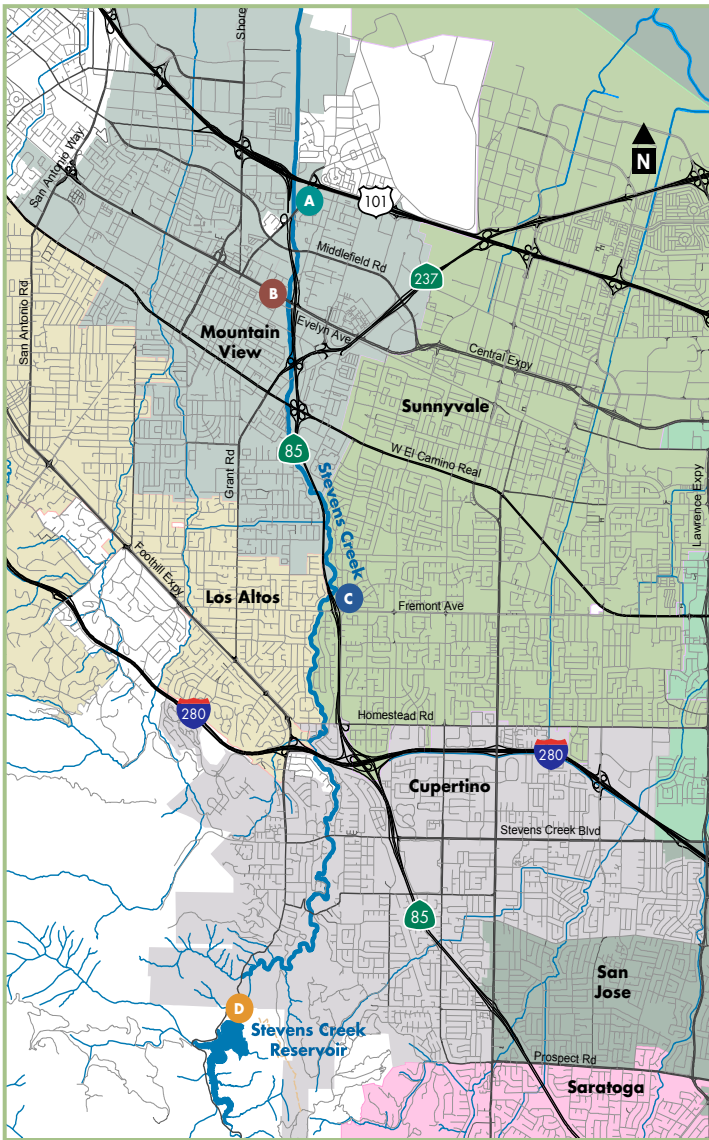


This project is in the **Lower Peninsula Watershed**, a 98-square-mile area whose many small-creek watersheds feed the tidal wetlands along the San Francisco Bay's southwest shoreline. Its San Francisquito and Stevens creeks are among the last remaining viable steelhead trout runs in the county.

What we do

The Santa Clara Valley Water District manages water resources and provides stewardship for the county's five watersheds, including 10 reservoirs, hundreds of miles of streams and groundwater basins. The water district also provides flood protection throughout Santa Clara County.

Visit our website, www.valleywater.org.



Project area map shown above. Lettered areas indicate project sites.

LEGEND

Project sites

- A** Moffett Blvd
- B** Evelyn Ave
- C** Fremont Ave
- D** Stevens Creek Dam

Contact us

For more information, contact **Saeid Hosseini at (408) 265-2607, ext. 2680**, or visit our website at www.valleywater.org and use our **Access Valley Water** customer request and information system. With three easy steps, you can use this service to find out the latest information on the project or to submit questions, complaints or compliments directly to a district staff person.

